

Western Heat & Forge Pvt. Ltd.

Capabilities

- API 20B • API 20C • ISO 9001 • IATF 16949
- ISO 45001 • ISO 14001 • PED
- NABL ISO/IEC 17025 LAB



Global Supplier of Forged, Machined, Coated and Turnkey Components



WESTERN
HEAT & FORGE

VISION

To be the First Choice of our Customers, Employees & all other partners including our community.

MISSION

To achieve its stated Vision, WHF will strive to deliver 100% Quality and 100% OTD to its Customers and Partners.

About WHF

WHF is Global, Reliable Supplier for high Quality Forged, Heat-treated, Machined, Coated, Turn-key components all Under One Roof



Established
in 1982



590+
employees



50% Export
Customers

- ❑ 1st Company in the world to get **API 20B** and 6th to get **API 20C** certified
- ❑ New World Class Precision Forging Facility starting in July 2026
- ❑ Hydraulic Forging Hammers and Presses for Precision Forgings - **1T, 2T, 3T, 4T , 1000T, 1600T**
- ❑ Annual Forging Capacity - **30,000 Tons.**
 - Closed Die Forging **24,000 Tons/** Year Components Up to 100 kgs
 - Open Die Forging **6,000 Tons /** Year Components Up to 1000 kg.
 - In-house Heat Treatment **AMS 2750** certified, Divgi, Mahindra Driveline, Raymond-Maini, CAT, Voith Gmbh, SLB, NOV, Alfa Laval approved
 - In-house **NABL/ISO 17025 Metallurgy Lab**
 - Phosphating, PTFE Coatings WHF Joint Venture with Technicoat Functional Coatings of Czech Republic
 - Total Productive Maintenance (TPM) to ensure **100% Quality** and On-Time Delivery

- ❑ ISO 9001 Machining Components Division -
Advanced CNC Machining & Metrology Lab Equipped with Karl Zeiss CMM, Karl Maher Surface roughness tester, Gagemaster thread gauge, 3D scanning systems to ensure precise CTQ measurement

WHF Team



Sanjay Jindal
Managing Director



BN Patil
CEO



Vishal Dahapute
Head - Human Resource



Navjyot Singh
Head – NBD & Strategy



Sushant Gundgal
Plant Head - Forging



Vijay Badade
Head - Sales



Ganesh Mahadik
Head - NPD Forging



Jayant Shekadar
Plant Head - Machining



Mandar Danait
Quality Head -Machining



Vikas Komati
Head - NPD Machining



Purushottam Wanjakhede
Quality Head - Forging

Our Prestigious Clients

Direct Customers



Tier 2 & 3 Customers



Global Presence



Certifications

Certification Name	Certification Institute	Certification Number	Validity
API 20B	American Petroleum Institution	20B-0061	26-May-29
API 20C	American Petroleum Institution	20C-0030	26-May-29
ISO 9001:2015	Bureau Veritas	CZE - 220080, IND.22.10853/QM/U	29-Oct-26
IAFT 16949	Bureau Veritas	IN045159 - IATF	29-Oct-26
PED	Pressure Equipment Directives	IND.20.6314/QM/N	10-Nov-26
ISO 14001:2015	Bureau Veritas	IND.23.7012/IM/U	12-Sep-28
ISO 45001:2018	Bureau Veritas	IND.23.7012/IM/U	12-Sep-28
ISO 17025 / NABL - LAB	NABL	TC-5671	18-Jul-26

Quality Systems to meet Customer requirements

Technical Feasibility Study	FMEA
Capacity Analysis	Method / Process Sheets
APQP	Control Plans / MSA
Contract / PO Review	Dock Audits

Forging Capabilities

Closed Die	Open Die
<p>Forging Plant 1 Hydraulic Hammer 1 Ton, 2 Ton, 3 Ton Hydraulic Press 1000 Ton Press Hydraulic Press 1600 Ton Press</p> <p>New Forging Plant 2 4 Ton CNC Hammer (Under Commissioning) 1 Ton CNC Hammer (Under Commissioning)</p> <p>Hydraulic Hammer 8 Ton - On Lease At Chakan</p>	<p>Forging Plant 1</p> <p>2 Ton Hydraulic Hammer 3 Ton Hydraulic Hammer</p>
<p>Forging Range and Capacity</p> <p>Weight: 1 - 100 Kgs single piece Capacity >2000 Tons / Month Capacity > 500,000 Pieces / Month Spare Capacity > 50%</p>	<p>Forging Range and Capacity</p> <p>Weight: 50 - 1000 Kgs single piece Capacity > 500 Tons / Month Spare Capacity > 50%</p>



State-of-the-art Die Design and Forge Simulation Expertise

- Developed > 6000 unique forged components in Close Die Forgings
- **FeatureCAM** - create Numerically Controlled Tool Path for die cutting on high speed CNCs
- **Transvalor** - State of the art software for **forging simulation** to obtain **1st time right forgings**
- Solid works, AutoCAD, Unigraphics for design and engineering

Heat Treatment Capabilities

- Heat Treatment Facility -Mahindra Driveline, Divgi, API, CAT, SLB, Alfa Laval, Voith Approved

Batch Furnace	Continuous Furnace	Instrumentation
Capacity 1.5 - 6 Tons - Gas Fired And Electric	Capacity 1 Ton/hour Capacity 500 kg/hour } Gas Fired	Calibrated to API 6A, AMS 2750 standards
Processes <ul style="list-style-type: none"> Normalizing Annealing, ISO-Annealing Solution Annealing Post Weld Stress Relieving Hardening & Tempering Precipitation Hardening Quenching Media <ol style="list-style-type: none"> Oil Water Polymer 	Processes <ul style="list-style-type: none"> Normalizing ISO-Annealing Hardening Tempering Quenching Media <ol style="list-style-type: none"> Oil Water Polymer 	<ul style="list-style-type: none"> Chino HT Chart Recorders Chino Data Loggers K - Type Thermo-Couples Temperature Controllers Auto Charger for Quench Application Deep-throat, fully automated Hardness Tester calibrated as per ISO 6506-1

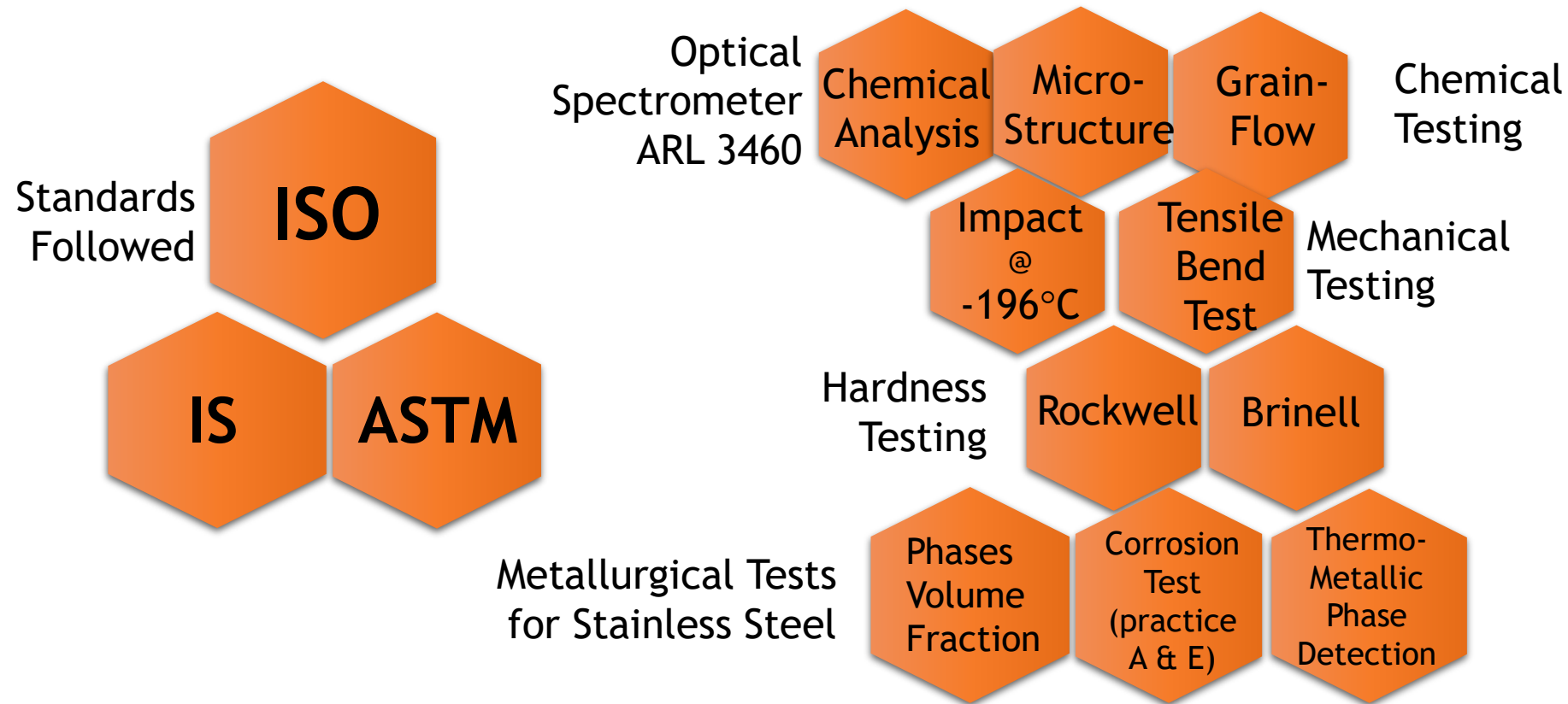
Quality Forgings Need Quality RM

- Strategic buying with renowned Steel Mills - JSW, Kalyani Steel, Saarloha, Nippon Sanyo Special Steels, Mukand, Laxcon, Sunflag, SAIL, SLR, Arora, Aarti, Arjas, others
- Original mill test certificates with each supply. 100% incoming testing.

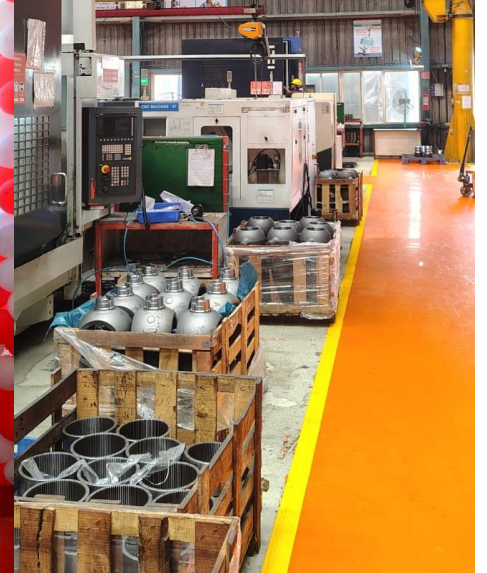
WIDE VARIETY OF STEELS					
Carbon and Low Alloy Steels	Case Carburizing Steels		Stainless, Duplex & Super Duplex Steels		Through Hardening & Other Steels
ASTM A105	AISI 8620	SAE 8822 H	AISI 410	DIN 1.4462	42CrMo4/EN 19
A350 LF2 Class 1, SAE 350 LF6	17NiCrMo6-4	18CrNiMo7	AISI 316/316L	DIN 1.4418	43B17
A694 F60	EN 36C	EN353	AISI 304/304L	DIN 1.4057	AISI 4330V, 8630
AISI 4130 upto 95Ksi	EN 354	AISI 4320, 4320H	AISI 420, 431	ASTM A182 F321	ASTM A 182 F22
AISI 4140 / 4145H upto 130Ksi	20Mn/ 16MnCr5		ASTM A182 F347	17-4PH	EN 24/817M40, EN 26
AISI 4340, 4320H	AISI 8720		ASTM A182 F6A	ASTM A182 F51, F55	ASTM A182 F6NM
S355J2, S355J0	AISI 9313			Inconel - 625,718,825	ASTM A182 F9, F11,F91
API 5L X42	AISI 4815				

ISO/IEC 17025 Accredited Lab

- Customer Approvals - Schlumberger, Mahindra Driveline, Divgi, Raymond-Maini, GE, Emerson, Siemens, Wesco, Goodwin, NOV, Baker Hughes

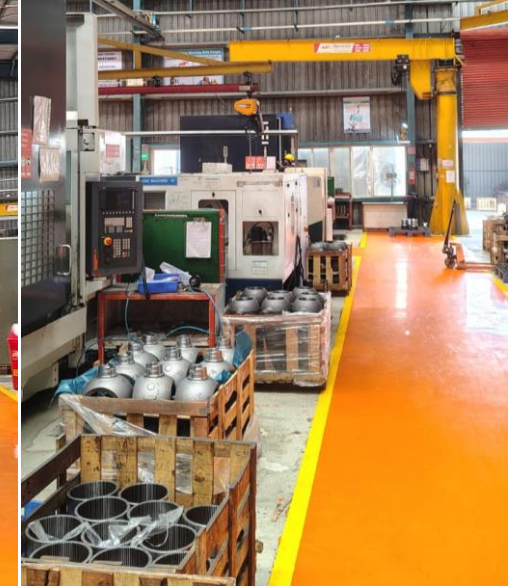


WHF Machining Plant - Chakan



WHF - Machining Capabilities

- ISO 9001:2015 Approved
- Turnkey Tested Components for Emerson, GE Oil and Gas, Schlumberger and Wipro Infrastructures
- In-house Hydrostatic Testing up to 1500 Bar/21,000 PSI
- Metrology Lab with CMM, Conturograph, Video Image Analyzer



WHF Expansion 2026- Forging plant 2

World Class State of the art Precision Forging plant 2, Operational in July 2026.

- 4 Ton CNC Hammer (Under Commissioning)
- 1 Ton CNC Hammer (Under Commissioning)



Architectural plant view

CNC Machining Capabilities

Description	Capacity
Turning Centers : 20 nos Make: Doosan, DMG Mori, ACE, LMW, BFW	Turning Diameter: Upto 20 Inch Length: Upto 40 Inch
Vertical Turning Lathe (VTL): 4 Nos Make: Hwacheon, BFW, LMW	Turning Diameter: Upto 30 Inch Length: Upto 30 Inch
Horizontal Machining Centers (HMC): 4 Nos Make: Okuma, Mitsui Seiki, Doosan, BFW	Max Bed Size - X - 40 Inch; Y-30 Inch; Z-33 Inch
Vertical Machining Centers (VMC): 10 Nos Make: Okuma, Haas, LMW, Mazak	Max Bed Size with B-axis X - 42 Inch; Y-22 Inch; Z- 22 Inch
Hydrotesting Machine	10 bar TO 1500 bar

State-of-the-art Metrology Lab

- Carl-Zeiss CMM: X-700mm. Y-1000mm. Z-570mm
- Carl-Zeiss Conturograph: Hauser Profile Projector
- Gage Master for Thread Profile Measurement
- Surface roughness tester: Karl Maher
- 3-D scanners for measuring CTQs

Machines & Measuring Instruments



OIL & GAS sector Products



Valve Body



Bonnet



Major Gate



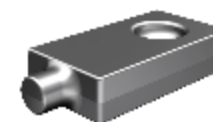
Minor Gate



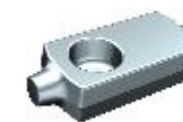
Flanges



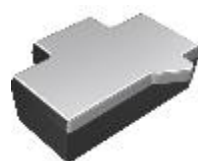
Wing Nut



Slab Gate



Slab Gate



Ram Forging



Cross



Solid Tee



5A Body



Adapter



Butterfly Valve
Disc



Dual Plate



Check Valve Body



Tees/Cross
Block



Round/Gear
Blank



Flange Shaft



Adaptor



Spool



Hollow Shaft

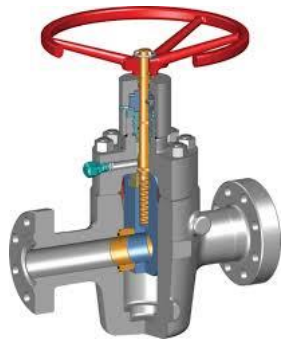


Tubular



Tubular

Oil & Gas Applications



Gate Valve components



Check Valve components



BOP Components



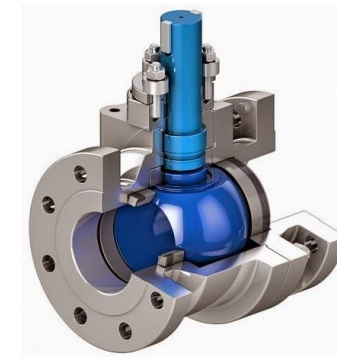
Pneumatic & Hydraulic Actuator Components



Well Head - Xmas Tree Components



Frac Mud pump valve components



Stem Ball Valve Components

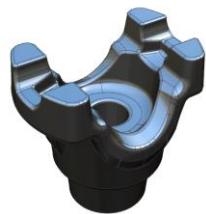
Automotive Products



Yoke Shaft



Stub Yoke



Half End Yoke



End Yoke



Axle Yoke



Tow Hook Yoke



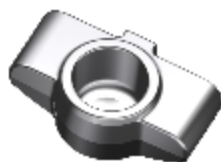
Yoke



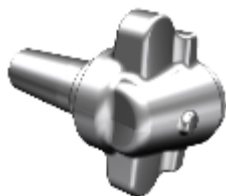
Fuel Pump Body



Whl Brg Spindle



Bearing Block



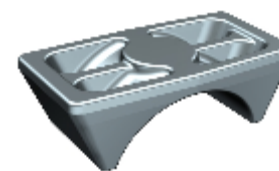
Steering
Knuckle



Bracket Relay
Arm



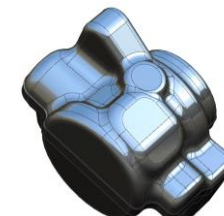
Pitman Arm



Spring Saddle



Link



Fuel Pump Body



Counter Shaft



Conn Rod



Spindle Forging



Gear Forging



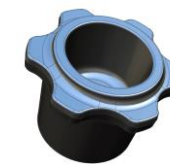
Bowl Body



Bowl Hood

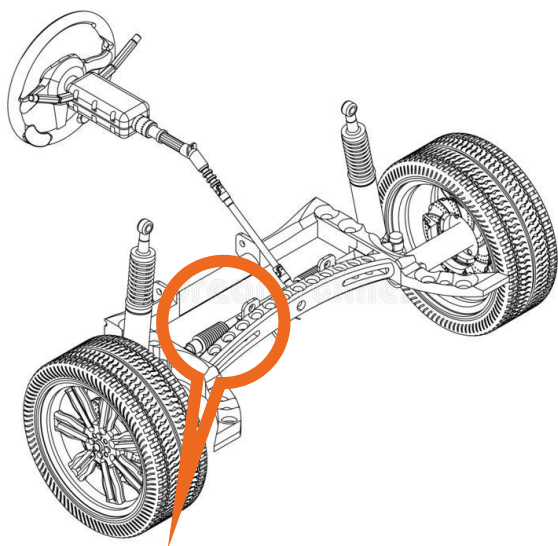


Damper Fastener

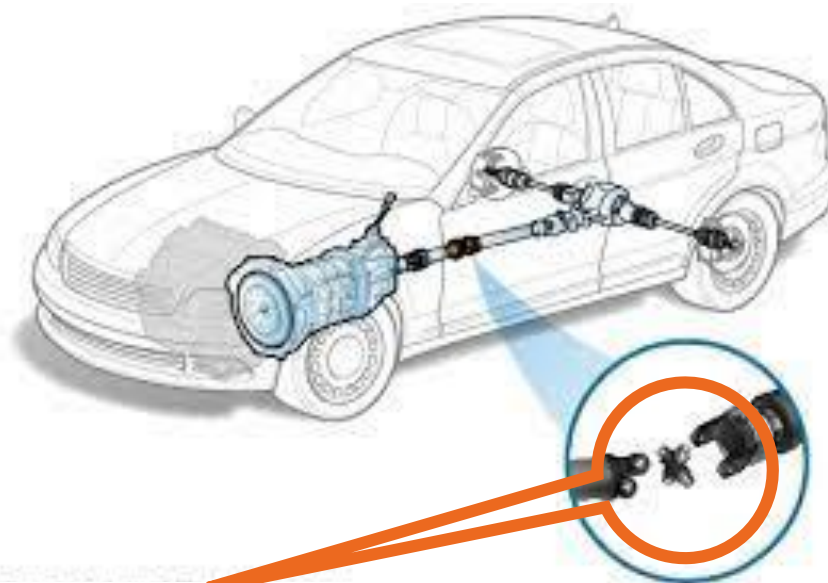


Flange
Flange

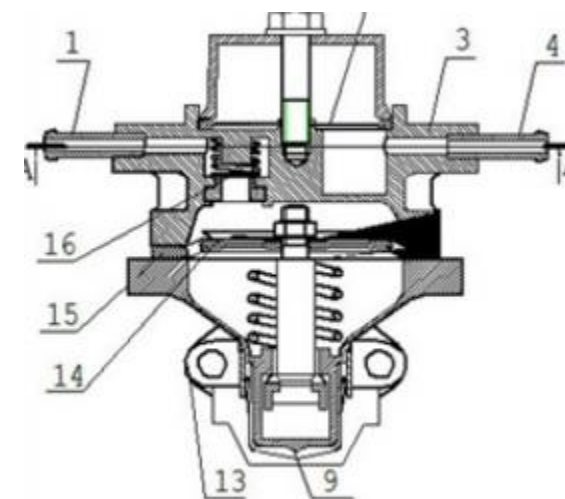
Automotive Applications



Stub Yokes and Steering
Parts



Universal Joint yokes



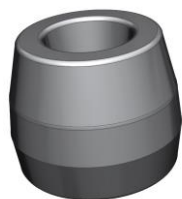
Fuel injection pump body
for gasoline engines

We manufacture forged and machined components for transmission applications, engineered to withstand heavy loads and deliver reliable performance in demanding operating conditions.

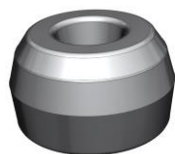
Railways Products



Stem



Stuffing Box Forging



Gland



Lug Forging



Draw Bar



Muff
Couplings



Hook Plate



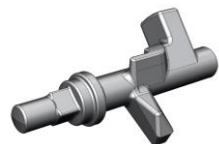
Support Forging



Support Forging



Shaft Wheel



Cam Shaft



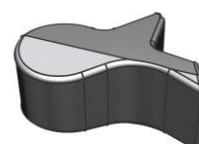
Yoke Assembly



Gear Blank

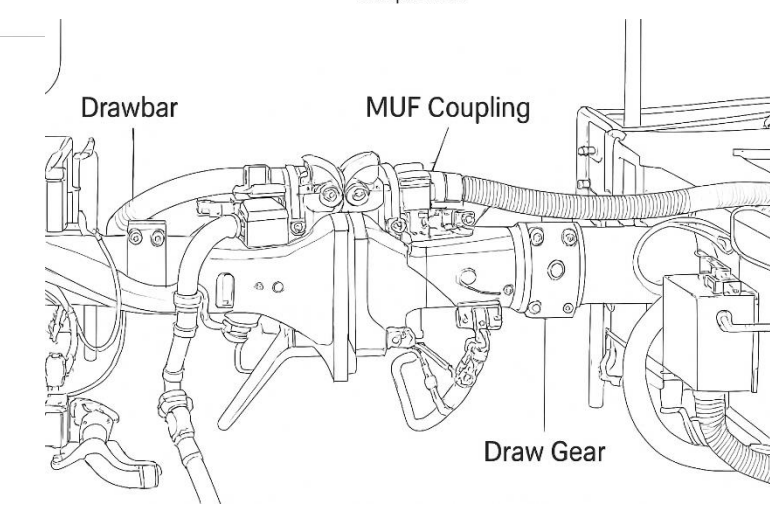
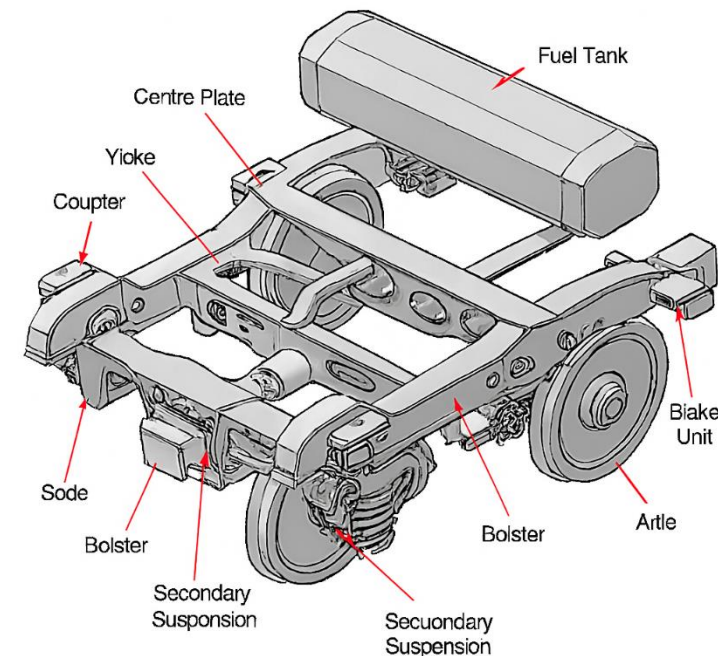


Pinion Gear



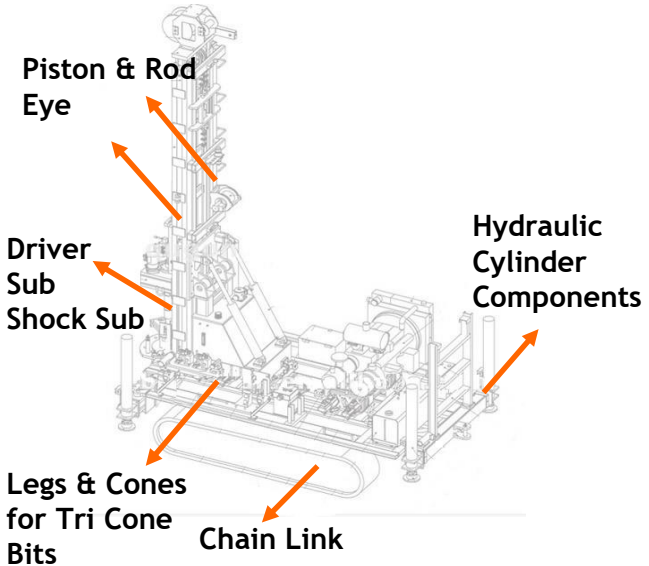
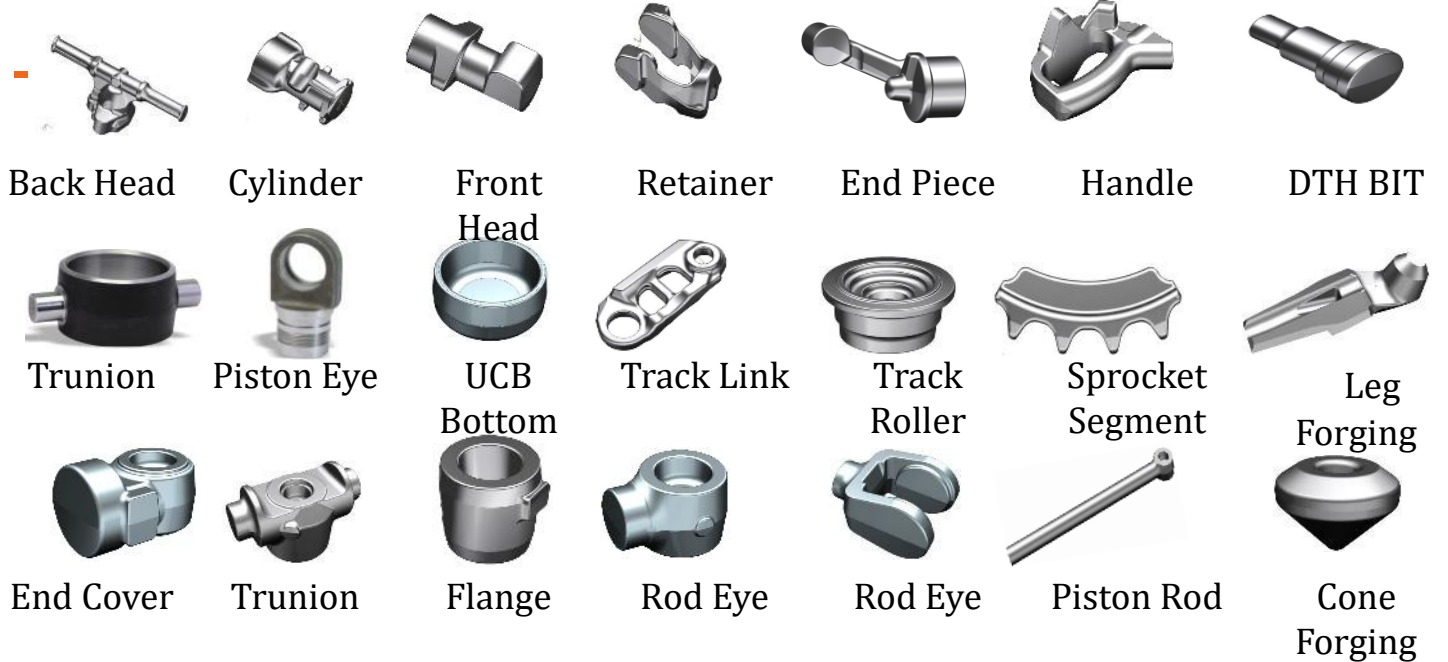
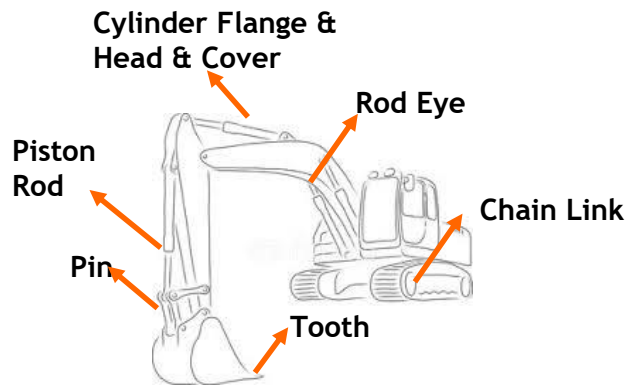
SR Pawl

Railway Applications



Construction & Mining Products and Applications

Construction products -



Mining products -

- Legs & Cones for Tricone upto 17 1/2 ”
- Driver Sub
- Pick Holder
- Main Shaft Sleeve
- Drive Stub Shafts
- Open Die Forged Parts for Stone Crushers
- Jack Hammer - Front Head / Back Head / Cylinder

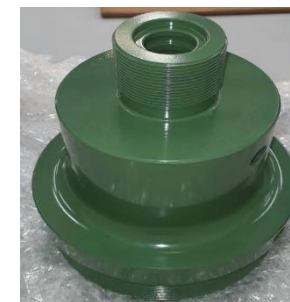


Technicoat Functional Coatings



- ✓ PTFE, PFA, FEP, ETFE, E-CTFE, PA-11, Thermoplasts, PEEK, Epoxy, Polyurethane, Epoxy GF, etc.
- ✓ More than 50 different coating types

Coated Components



Western Heat & Forge Pvt. Ltd.

Forging Plant 1, Head Office

J-2 'S' Block | MIDC | Telco Road | Bhosari | Pune -
411026 | India

Tel No : +91 20 66359200 Fax No : +91 20 27120410
+91 20 27122202 +91 20 27122202

Forging Plant 2 And Machining Plant

Chakan Phase 2 | Bhamboli | Pune

Tel No : +91 20 66359200 Fax No : +91 20 27120410
+91 20 27122202 +91 20 27122202

Enquiries @ - SALES@WesternHeatForge.com

Mr. Sanjay Jindal
Managing Director



- SJindal@WesternHeatForge.com

Mr. BN Patil
CEO



- bnpatil@westernheatforge.com

Linked IN : [www.linkedin.com/company/
WesternHeatForge](http://www.linkedin.com/company/WesternHeatForge)

Webpage : www.WesternHeatForge.com

Thank You!!!!

